



## 10 Newitt Drive Austins Ferry TAS

3 1 2

Welcome to relaxed living in Austins Ferry: This solid brick, three-bedroom family residence is beautifully framed by blooming gardens and offers breathtaking 180-degree views of the Derwent River.

### Key Features:

- \* Open Plan Living: Enjoy a spacious living, kitchen, and dining area that seamlessly connects to an outdoor deck?perfect for entertaining and enjoying the serene surroundings.
- \* Comfortable Bedrooms: Two of the three bedrooms come equipped with built-in robes, providing ample storage and comfort for the whole family.
- \* Family Bathroom: The well-appointed bathroom features a three-piece suite, with a separate toilet for added

**Type** : House  
**Price** : Offers Over \$495,000  
**Building Size** : 90 sqm  
**Land Size** : 834 sqm  
**View** : <https://www.4one4.com.au/property/10-newitt-drive-austins-ferry-tas/8159672>



**Marilyn Rooney**  
0408 579 454

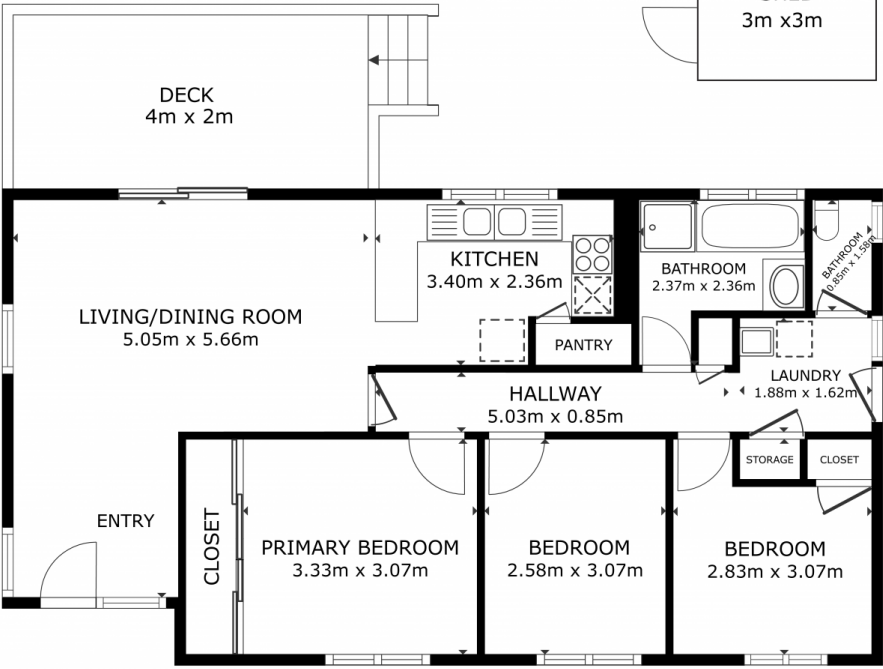
[For full version visit the website](https://www.4one4.com.au)



GARDEN SHED  
3m x 3m

GARDEN SHED  
3m x 3m

CARPORT  
3m x 5m



FLOOR PLAN

**AUSTINS FERRY. 10 Newitt Drive**

**GROSS INTERNAL AREA**  
 FLOOR PLAN 77.1 m<sup>2</sup>  
 DECK 13.6 m<sup>2</sup>  
 TOTAL : 89 m<sup>2</sup>

SIZES AND DIMENSIONS ARE APPROXIMATE, ACTUAL MAY VARY.