



14 Church Street Oatlands TAS

4 1 4

Step into a piece of history with this stunning 1935 home, perfectly blending original charm with modern conveniences. This residence boasts high ceilings, elegant picture rails, and beautiful solid timber features throughout, offering a warm and inviting atmosphere.

Key features include:

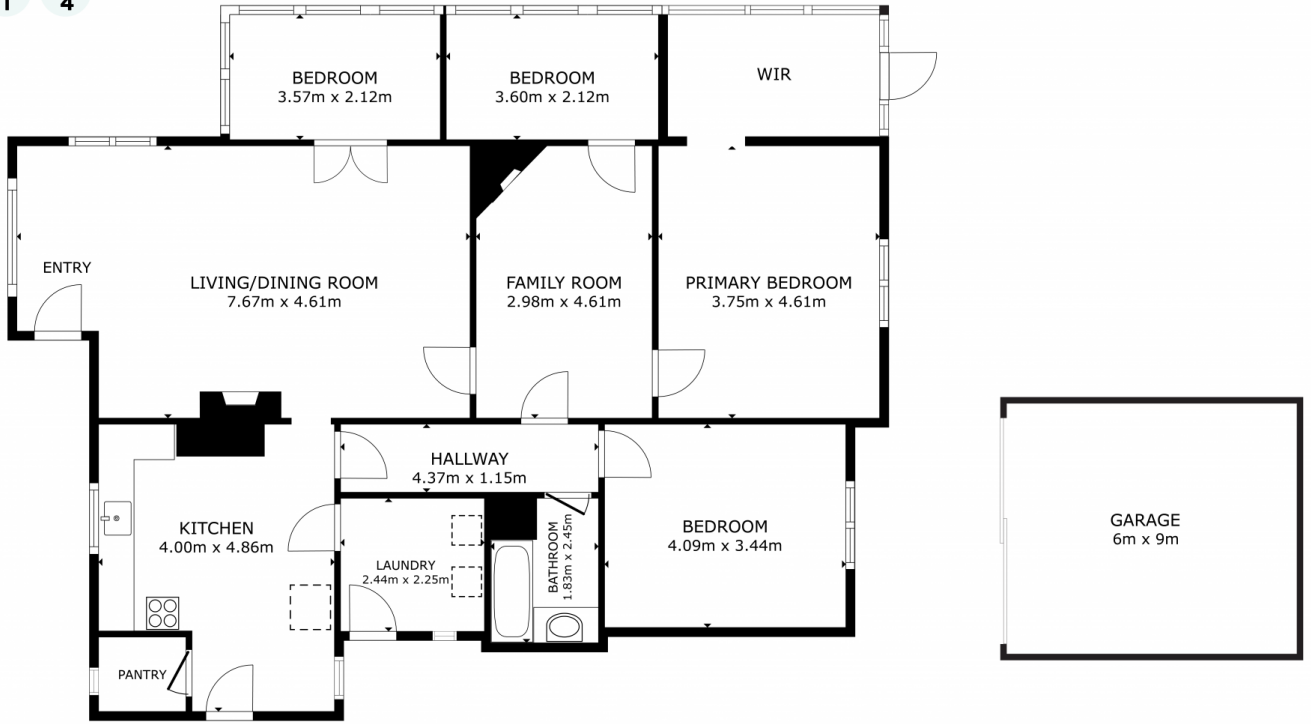
- * Spacious Living Areas: Enjoy multiple living spaces, ideal for family gatherings or quiet evenings.
- * Versatile Enclosed Verandah: Currently used as a 3rd and 4th bedroom, this sectioned-off area adds flexibility to the home.
- * Modern Upgrades: Recent updates include new roofing, guttering, and wiring, ensuring comfort and safety for years

[For full version visit the website](https://www.4one4.com.au/property/14-church-street-oatlands-tas/8154847)

Type : House
Price : Offers Over \$495,000
Building Size : 157 sqm
Land Size : 1278 sqm
View : <https://www.4one4.com.au/property/14-church-street-oatlands-tas/8154847>



Martin Evans
0362 737 414



OATLANDS. 14 Church Street

GROSS INTERNAL AREA
FLOOR PLAN 132.6 sq.m.
SIZES AND DIMENSIONS ARE APPROXIMATE, ACTUAL MAY VARY.

4ONE4.
PROPERTY CO.