



2/26 Elwick Road GLENORCHY TAS

2 2 2

Step into the heart of Glenorchy with this fantastic opportunity at 2/26 Elwick Road—a charming 2-bedroom unit that's got it all! This cozy gem is ideal for a disabled person, first-time buyers, savvy investors, or perhaps a retiree looking to downsize into a low-maintenance lifestyle.

Nestled in a small complex, this unit offers two generously sized bedrooms, both with built-in robes, perfect for all your storage needs. The open-plan living and dining area is bathed in natural light from the large windows, making it the perfect spot to relax or entertain guests. The kitchen is practical and spacious with plenty of storage and worktop space—meal prep has never been so easy!

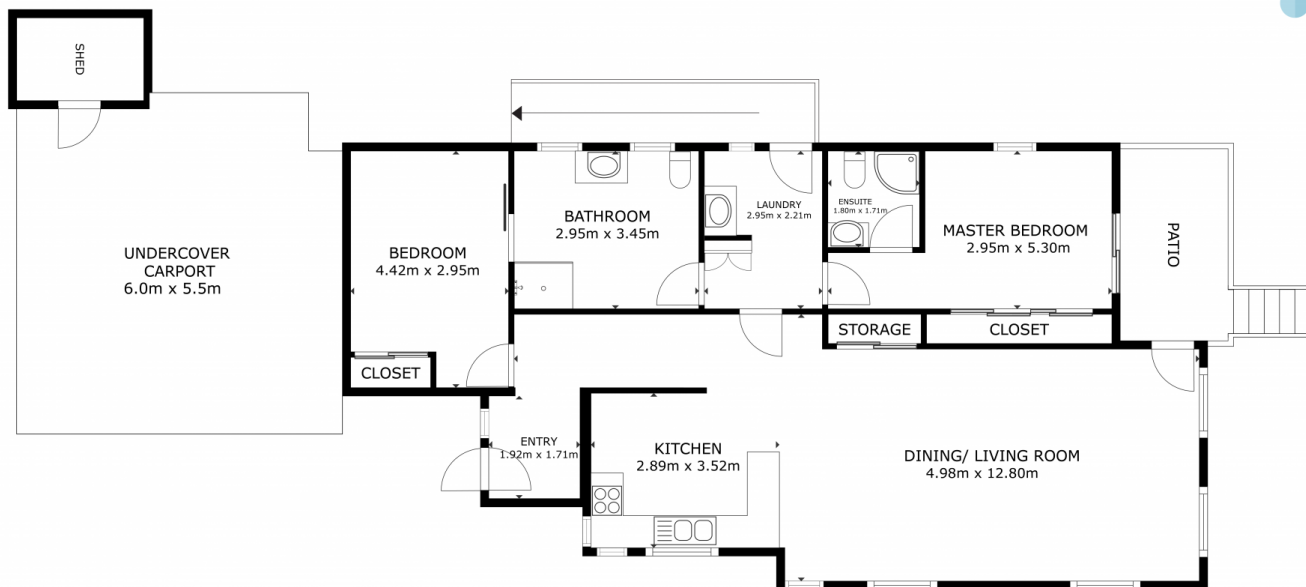
Step outside and you'll find a private courtyard—a perfect

[For full version visit the website](https://www.4one4.com.au/property/226-elwick-road-glenorchy-tas/8147157)

**Type** : Unit  
**Price** : Offers Over \$495,000  
**Building Size** : 117 sqm  
**Land Size** : 294 sqm  
**View** : <https://www.4one4.com.au/property/226-elwick-road-glenorchy-tas/8147157>



**Laurie Gray**  
0362 737 414



**GLENORCHY. 2/26 Elwick Road**

GROSS INTERNAL AREA  
FLOOR PLAN 110.4 m<sup>2</sup>  
CARPORT: 37.3 m<sup>2</sup> PATIO 7.2 m<sup>2</sup>  
TOTAL : 154.9 m<sup>2</sup>

SIZES AND DIMENSIONS ARE APPROXIMATE, ACTUAL MAY VARY.

**4ONE4.**  
PROPERTY CO.