



92 Esplanade Oatlands TAS

3  1  4 

Welcome to the Esplanade, this modern home offers contemporary living in the heart of historic Oatlands. With level undercover entry, sunny open plan living, and energy-efficient solar power, this lovely home offers a peaceful lifestyle overlooking the picturesque Lake Dulverton.

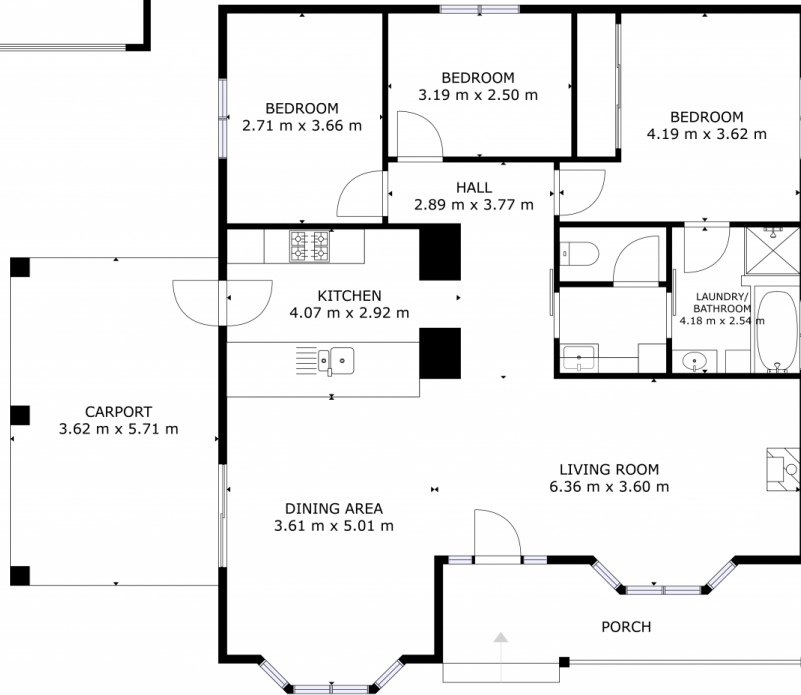
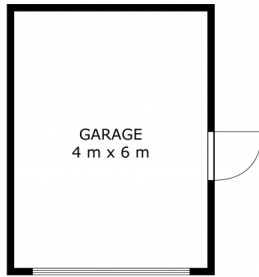
Drive in and park under the car-port then enter the home directly from here. Spacious open-plan living welcomes you with a modern kitchen offering a quality Smeg stove and there's plenty of cupboard & bench space to the left, a large sun drenched dining area to the right, and straight ahead to the living room. The home is kept cozy and warm thanks to the Norseman wood heater, and large floor-to-ceiling windows allow an abundance of natural light

[For full version visit the website](https://www.4one4.com.au/property/92-esplanade-oatlands-tas/8131316)

Type : House
Price : Offers Over \$535,000
Building Size : 107 sqm
Land Size : 811 sqm
View : <https://www.4one4.com.au/property/92-esplanade-oatlands-tas/8131316>



Martin Evans
0362 737 414



92 Esplanade, OATLANDS.

GROSS INTERNAL AREA
TOTAL: 122 m²

SIZES AND DIMENSIONS ARE APPROXIMATE, ACTUAL MAY VARY.