



30 Marlborough Street Oatlands TAS

3  2  6 

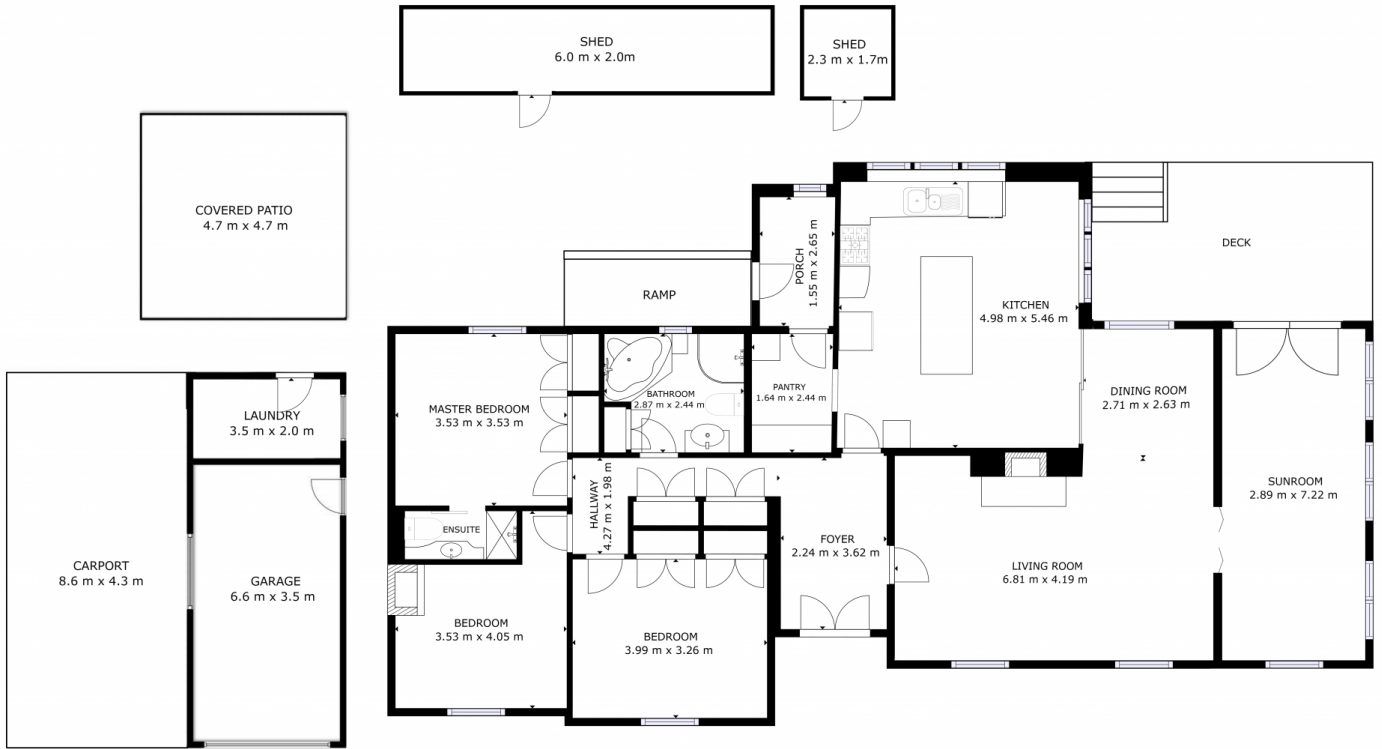
Welcome to 30 Marlborough St, Oatlands. Built in 1963, this meticulously maintained property offers a perfect blend of timeless charm with modern contemporary living in the heart of a historic town. The home is a generous 171m² in size and sits on a 1,513m² block of beautifully established gardens offering a unique lifestyle overlooking the picturesque Lake Dulverton.

Price : Offers Over \$635,000
Building Size : 171 sqm
Land Size : 1513 sqm
View : <https://www.4one4.com.au/property/30-marlborough-street-oatlands-tas/8082717>

An inviting entry hall welcomes you into the home which boasts multiple living areas including spacious formal living, separate dining, and a terrific family room which opens up to a lovely outdoor deck perfect for family gatherings and entertaining. The well-equipped kitchen is a chef's delight, featuring quality appliances, a walk-in pantry, and a large island bench perfect for meal preparation. Down the hall, you'll find three large bedrooms each with it's own heater & ceiling fan, built-in robes, the master bedroom features a



Martin Evans
0362 737 414



GROSS INTERNAL AREA
FLOOR 1: 171m²
GARAGE: 30m²
TOTAL: 201m²
SIZES AND DIMENSIONS ARE APPROXIMATE, ACTUAL MAY VARY.

4ONE4.
PROPERTY CO.