



8/267 Churchill Ave Sandy Bay TAS

2  1  1 

Welcome to 8/267 Churchill Avenue, Sandy Bay. This two bedroom apartment is located on the top level of a secure & secluded apartment block, providing you with privacy and security. This light filled apartment offers stunning views of Sandy Bay, the Hobart City and Mount Wellington.

Building Size : 60 sqm
View : <https://www.4one4.com.au/property/8267-churchill-ave-sandy-bay-tas/8052896>

Upon entrance you are greeted by the spacious, open plan living area with multiple large windows allowing for all day sunlight and breathtaking views. Off the living area you will find a fully functional kitchen, boasting ample cupboards and bench space for all your storage & culinary needs.

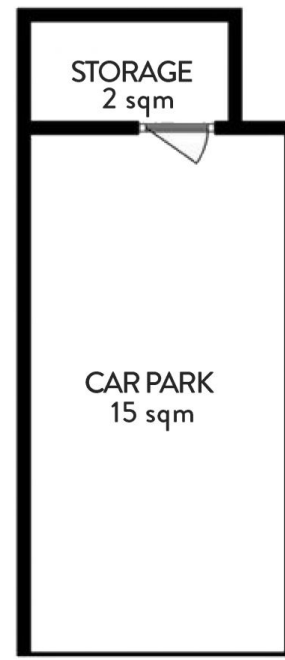
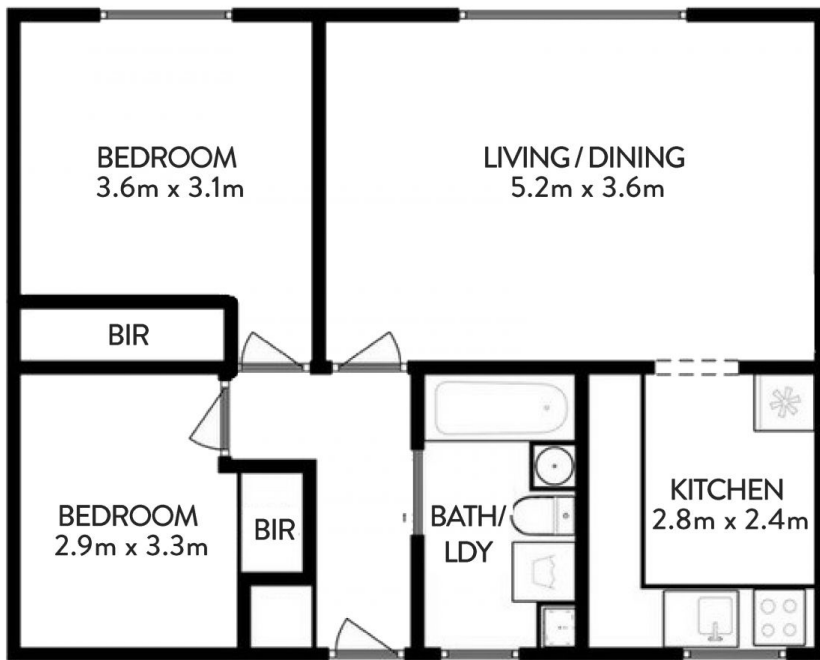
The apartment features two generously sized bedrooms, each with built in wardrobes. The main bedroom offers picturesque views, proving a serene backdrop to your daily routine. Both rooms are designed to offer ample space for



Janaya Horne
62737414



Brooke Hall
036273 7414



SIZES AND DIMENSIONS ARE APPROXIMATE, ACTUAL MAY VARY.

4ONE4.
PROPERTY CO.