



531 Churchill Avenue Sandy Bay TAS

3 1 3

Nestled in a lush, tranquil and secure setting, this well kept classic gem will delight on arrival: the space the floorplan provides combined with the leafy landscape and convenient position makes this a home you will want to add to your must see list!

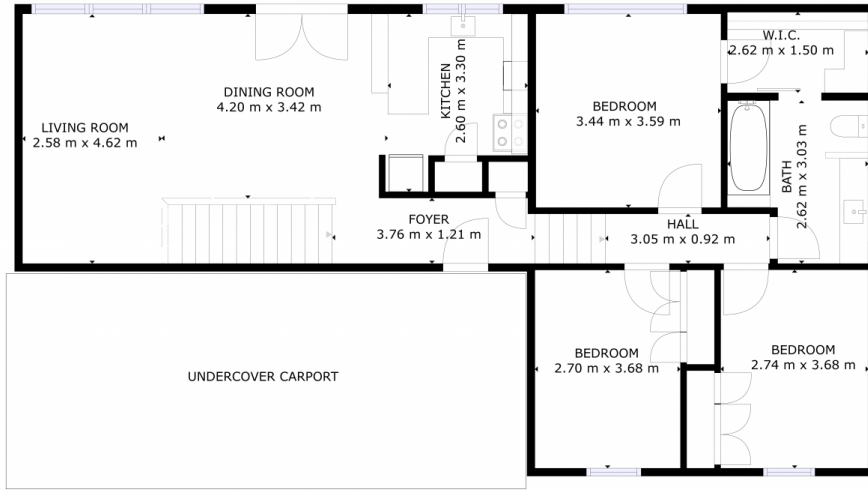
Split level, the accommodation quarters for the home are located on the upper floor and include three good sized bedrooms - two with built in robes and the master with walk in robe. The family bathroom has two way access from the master as well as the hallway. One is sure to appreciate the vintage decorative adornments the home displays in spades.

Favorably located at entry level are the large open plan living areas. The cute kitchen is functional in it's design and the space/storage it offers. The dining and lounge room

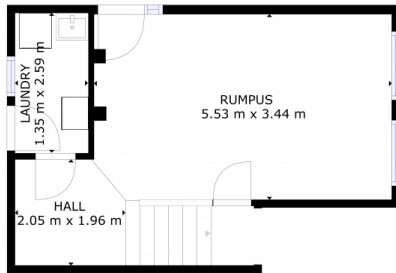
Price : \$ 940,000
Building Size : 140 sqm
Land Size : 1108 sqm
View : <https://www.4one4.com.au/property/531-churchill-avenue-sandy-bay-tas/7275327>



Marilyn Rooney
0408 579 454



FLOOR 2



FLOOR 1

GROSS INTERNAL AREA
 FLOOR 1: 30 m², FLOOR 2: 96 m²
 TOTAL: 126 m²

SIZES AND DIMENSIONS ARE APPROXIMATE, ACTUAL MAY VARY.

4ONE4.
 PROPERTY CO.