



8 Lowrie Place Glenorchy TAS

4  2  3 

Perfectly perched in an elevated position to take in expansive river and mountain views, 8 Lowrie Place is an imposing and gorgeous large family home set amongst other quality new builds in a quiet and desirable cul-de-sac location.

Carefully manicured low maintenance gardens provide instant curb appeal and a delight for the senses as you ascend the steps to the entranceway for the home. The upstairs level for the property is open plan and with triple aspect windows, the area is bathed in natural light. This zone comprises two separate living rooms, a dining area and sleek and chic modern kitchen featuring stylish appliances, Blanco sink, soft touch drawers and plenty of storage. There is also a handy island bench providing extra prep surface space and ideal for informal dining.

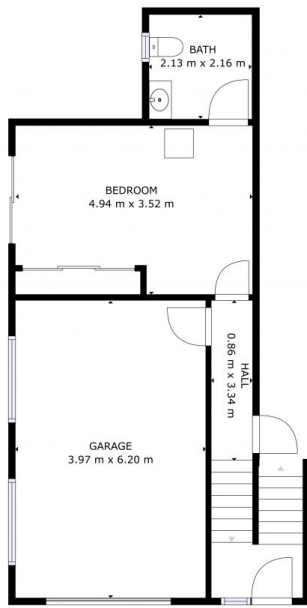
Price : \$ 940,000
Building Size : 237 sqm
Land Size : 867 sqm
View : <https://www.4one4.com.au/property/8-lowrie-place-glenorchy-tas/7170215>



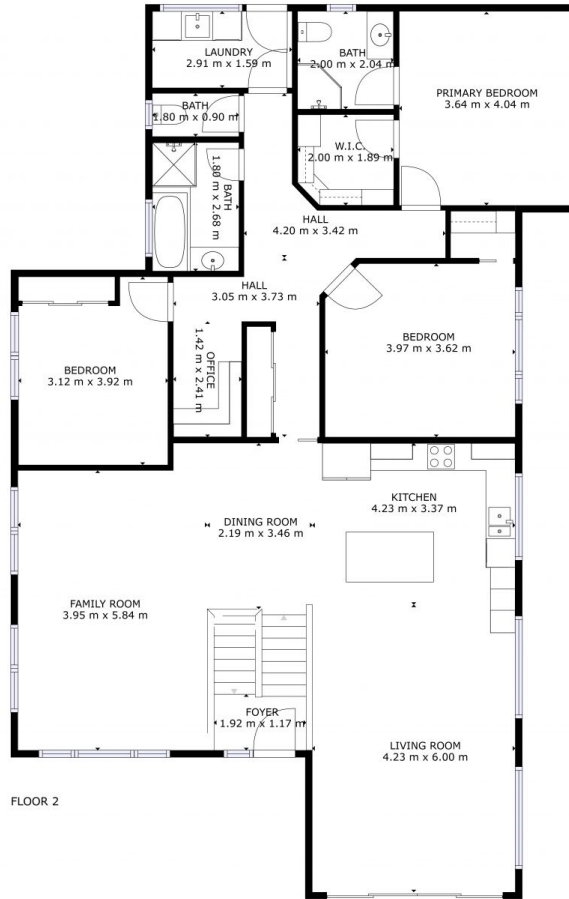
Marilyn Rooney
0408 579 454



Jenna Pearsall
0488 498 450



FLOOR 1



FLOOR 2

GROSS INTERNAL AREA
 FLOOR 1: 31 m², FLOOR 2: 162 m²
 EXCLUDED AREAS: , GARAGE: 25 m²

SIZES AND DIMENSIONS ARE APPROXIMATE, ACTUAL MAY VARY.