



62 Continental Road Glenorchy TAS

2 1 2

The idea that you can find a private sanctuary in the middle of Glenorchy is almost unheard of, yet 62 Continental Road offers this and so much more.

Sitting on over 470 square meters of land, every square inch has been utilised as you have the main house with 2 bedrooms, a separate carport & separate shed's at the back.

Best of all, the accommodation surrounds the beautiful gardens in the middle from watermelons to lemons allowing you to step outside and enjoy a moments peace as the trees, birds & flowers surround you.

- A bit of paint here and there will make this a great little home to enjoy.
- Open Plan Living.

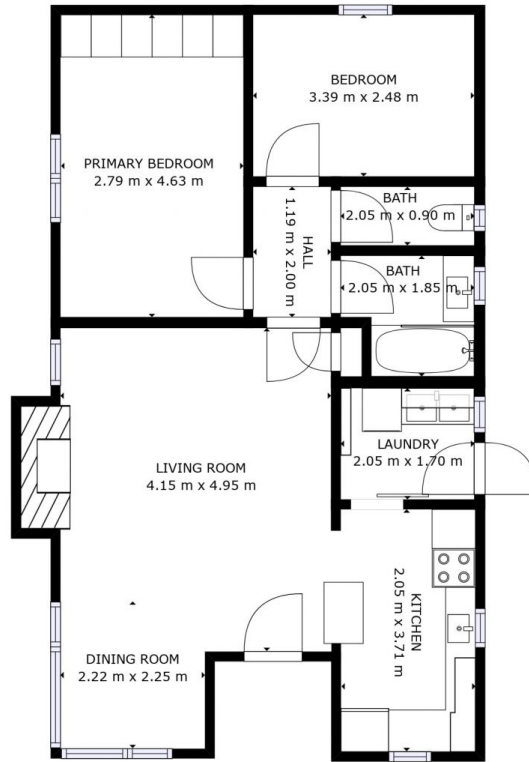
Price : \$ 515,000
Building Size : 77 sqm
Land Size : 470 sqm
View : <https://www.4one4.com.au/property/62-continental-road-glenorchy-tas/6993788>



Aaron Murray
0418969859



Chris McGregor
0407 421 177



FLOOR 1

GROSS INTERNAL AREA
 FLOOR 1: 70 m²
 TOTAL: 70 m²
 SIZES AND DIMENSIONS ARE APPROXIMATE, ACTUAL MAY VARY.