



1 & 2/15 Capri Drive SANDY BAY TAS

8 6 4

1 & 2 / 15 Capri Drive is an incredible opportunity to secure an incredible building the likes rarely ever seen come onto the market.

The property is made up of 2 titles and within each contain a 3-bedroom, 2-bathroom apartment and an open, self-contained flat on the lower level.

Being located in one of the most prestigious suburbs in Tasmania and boasting uncompressing views, this an exceptionally rare opportunity that cannot be missed.

- 2 Titles
- 2x 3 Bedroom, 2-bathroom apartments
- 2x Self-contained flats
- Diverse range of options to keep it as complete investment or live in one and lease out the others

Building Size : 794 sqm
Land Size : 443 sqm
View : <https://www.4one4.com.au/property/1-21-5-capri-drive-sandy-bay-tas/6961748>

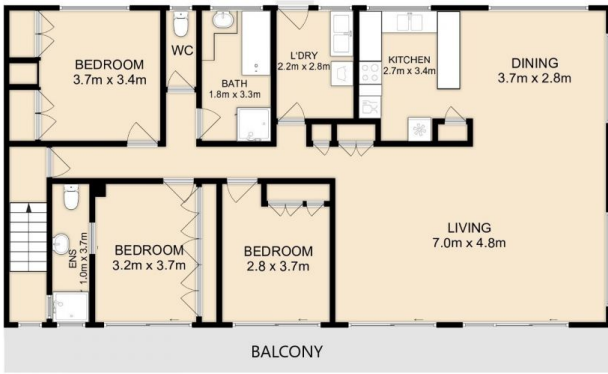


John McGregor
0419 892 104



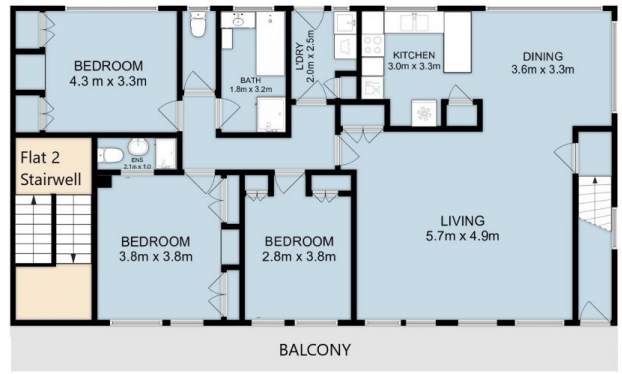
Chris McGregor
0407 421 177

UPPER LEVEL

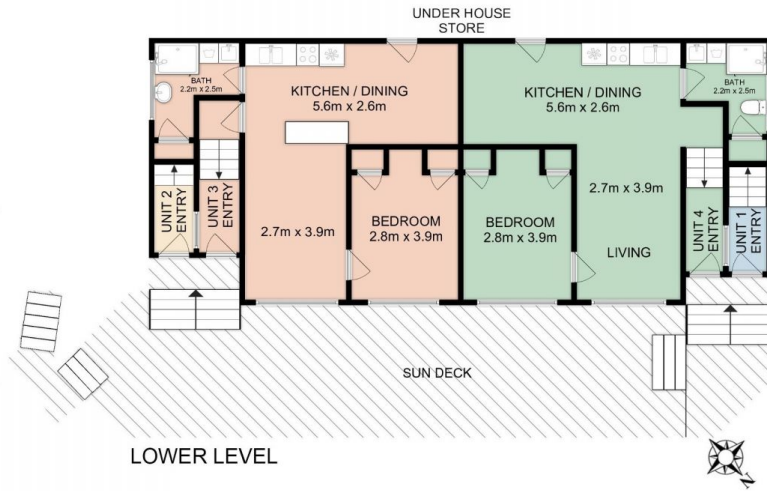


Unit 2/15 - ■ Floor 3 - 175m²
■ Floor 1 - 56.2m²

MIDDLE LEVEL



Unit 1/15 - ■ Floor 2 - 156m²
■ Floor 1 - 56.2m²



All measurements are internal and approximate. This plan is a sketch for illustration, not valuation.