



25 Paringa Road Glenorchy TAS

3  1  4 

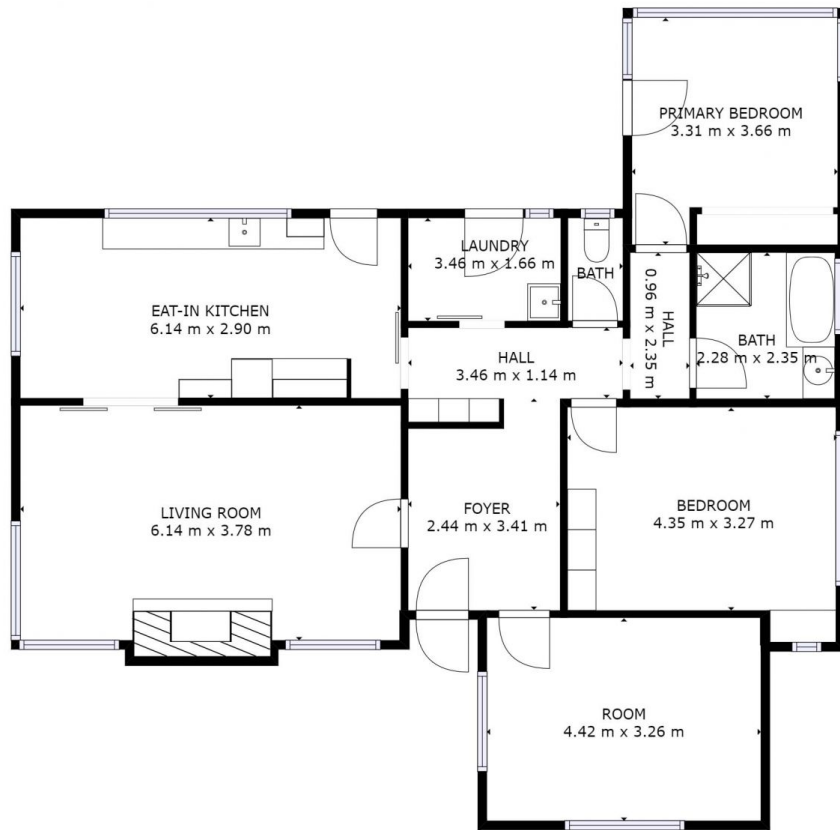
What a terrific property to get you started, whether you're looking for your first home or an investment property, this lovely property is loaded with potential.

Built in 1964, this solid home has retained all of its character and charm including a lovely ornate ceiling in the living room and solid timber floors lye betheith the floor coverings. A level entry leads you into a generous central hallway with the spacious living room to your left featuring electric heating, adjacent is the dine-in kitchen that's north facing and offers terrific Derwent River views plus there is access to a nice deck overlooking the back yard. On the right side of the hallway are three large bedrooms, 2 out of 3 have a built-robe and one of them has access to the deck! A neat and tidy 3 piece bathroom and a separate toilet and laundry complete the inside.

Price : \$ 605,000
Building Size : 117 sqm
Land Size : 599 sqm
View : <https://www.4one4.com.au/property/25-paringa-road-glenorchy-tas/6926629>



Martin Evans
0362 737 414



FLOOR 1

GROSS INTERNAL AREA
FLOOR 1: 113 m²
TOTAL: 113 m²
SIZES AND DIMENSIONS ARE APPROXIMATE, ACTUAL MAY VARY.

4ONE4.
PROPERTY CO.