



1 Bowden Street Glenorchy TAS

3  2  6 

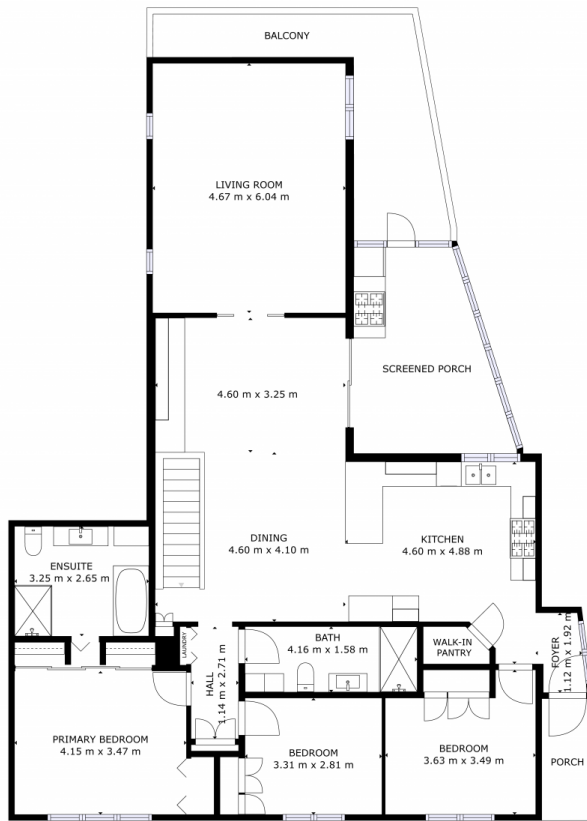
You'll feel like you're stepping into a brand new home full of quality fittings & features spread over two levels with a very functional floor plan. And like me, you'll no doubt find yourself saying, "Oh Wow?" as you explore what's on offer! After viewing the stunning photos I highly recommend that you now go straight to the virtual tour to get a better appreciation of this fabulous property.

This beautiful home features multiple living areas which include a modern well equipped kitchen offering quality appliances, natural gas hotplates plus plenty of storage & bench space. The adjacent dining area flows through to a fantastic undercover outdoor entertaining deck including a BBQ & fire-pit also connected to natural gas, perfect for entertaining all year round. The deck also wraps around the house and offers stunning Derwent River and distant mountain views. The upper level also includes a very

Price : \$ 820,000
Building Size : 190 sqm
Land Size : 766 sqm
View : <https://www.4one4.com.au/property/1-bowden-street-glenorchy-tas/6852721>



Martin Evans
0362 737 414

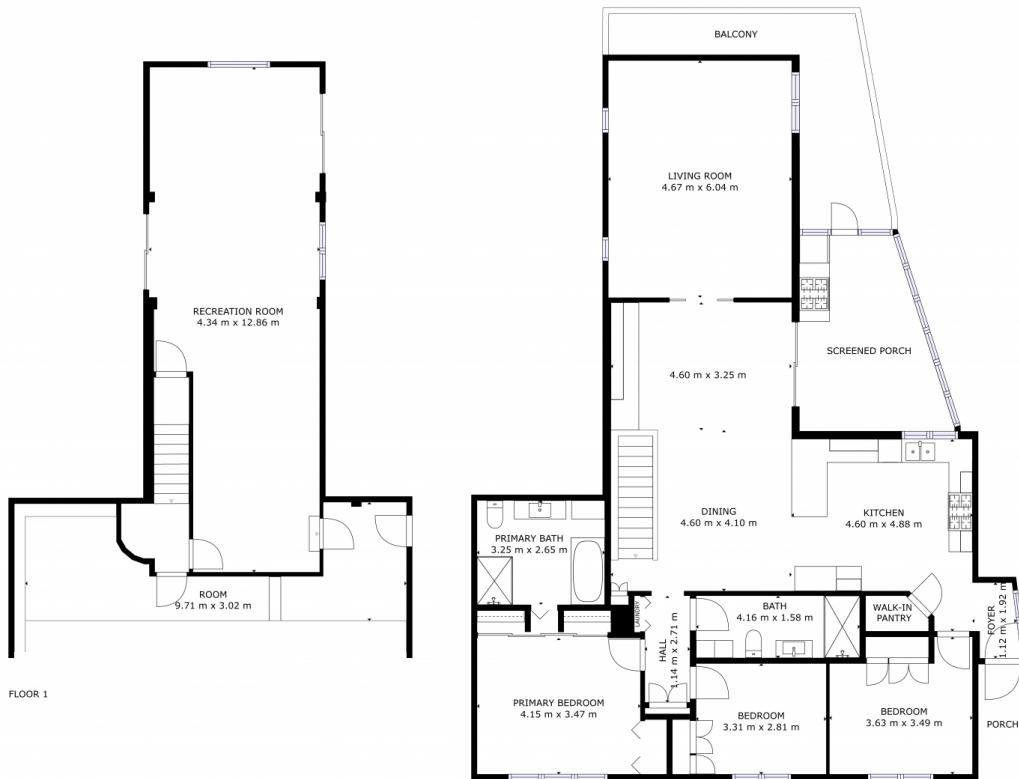


GROSS INTERNAL AREA
 FLOOR 1: 85 m², FLOOR 2: 149 m²
 EXCLUDED AREAS: , PORCH: 16 m²
 TOTAL: 235 m²

SIZES AND DIMENSIONS ARE APPROXIMATE, ACTUAL MAY VARY.

4ONE4.
 PROPERTY CO.

FLOOR 2



FLOOR 2

GROSS INTERNAL AREA
 FLOOR 1: 85 m², FLOOR 2: 149 m²
 EXCLUDED AREAS: , PORCH: 16 m²
 TOTAL: 235 m²

SIZES AND DIMENSIONS ARE APPROXIMATE, ACTUAL MAY VARY.

4ONE4.
 PROPERTY CO.