



14 Lang Place Glenorchy TAS

3  1  2 

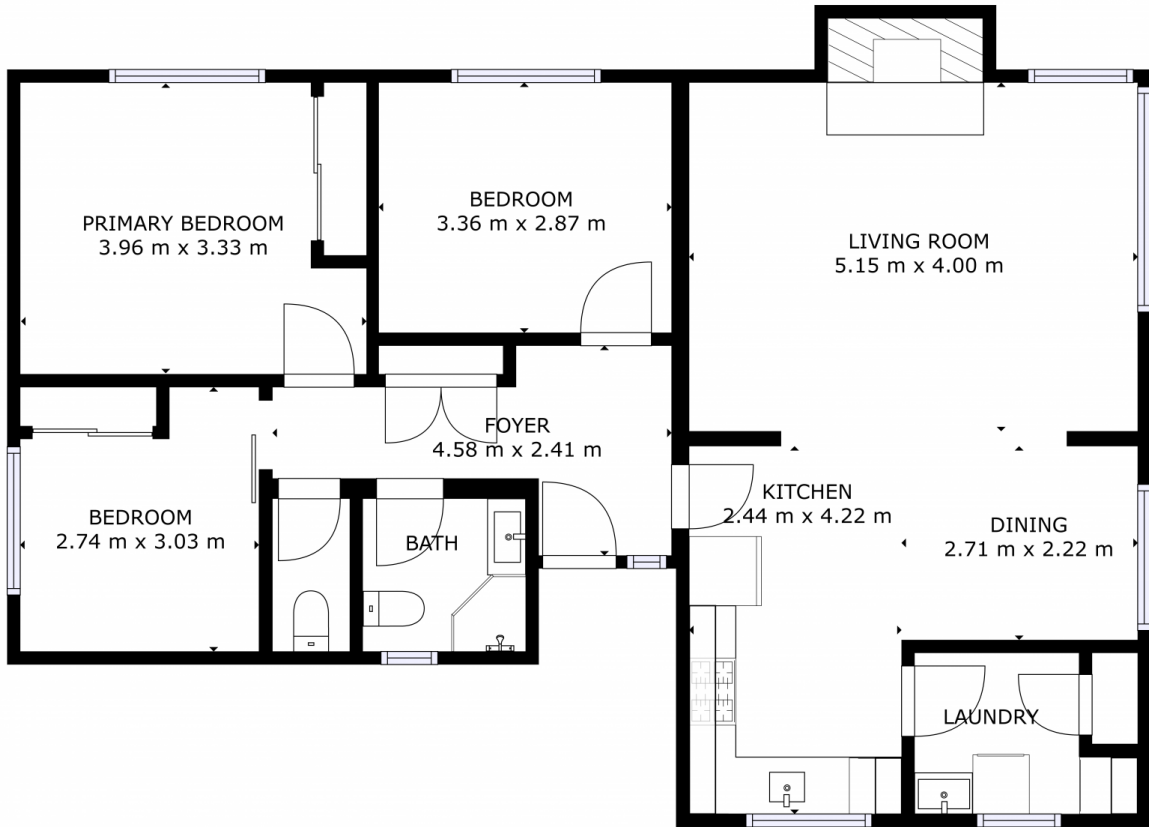
This terrific family home features lovely sunny open plan living with some lovely views over the Derwent River and beyond and has a very handy large multi-use area underneath as well.

The home also features mains gas heating, cooking and hot water, a spacious living area with large windows providing plenty of natural light and those lovely views. Adjacent is a fully equipped kitchen with plenty of cupboard and bench space and a nice sunny dining area. Down the hall you'll find 3x double size bedrooms with a built-in robes, a lovely modern 3 piece bathroom plus there's a very handy second toilet. The paint and floor coverings are well maintained throughout the house. Underneath features a large area perfect for extra living space, rumpus room, workshop space or a great man-cave.

Price : \$ 580,000
Building Size : 98 sqm
Land Size : 602 sqm
View : <https://www.4one4.com.au/property/14-lang-place-glenorchy-tas/6770486>



Martin Evans
0362 737 414



GROSS INTERNAL AREA
FLOOR 1: 93 m²
TOTAL: 93 m²

SIZES AND DIMENSIONS ARE APPROXIMATE, ACTUAL MAY VARY.

4ONE4.
PROPERTY CO.

FLOOR 1