



19/210 Chapel Street Glenorchy TAS

2 2 2

Within its brick veneer walls, 19/210 Chapel Street is a property that has been converted to be a fully Accessible Home.

With 2 bedrooms, 2 bathrooms, open plan living and fully enclosed yard, this modern villa is the kind of property that caters for both now, and long into your future.

- Modern, 2 bedroom, brick veneer villa with off street & secure parking
- Open plan living, dining and kitchen with converted space for accessibility
- 2 Bathrooms, with the master ensuite set up for full disability support
- Electric windows, front door, garage roller & other essential features
- Private & low maintenance, fully fenced back yard

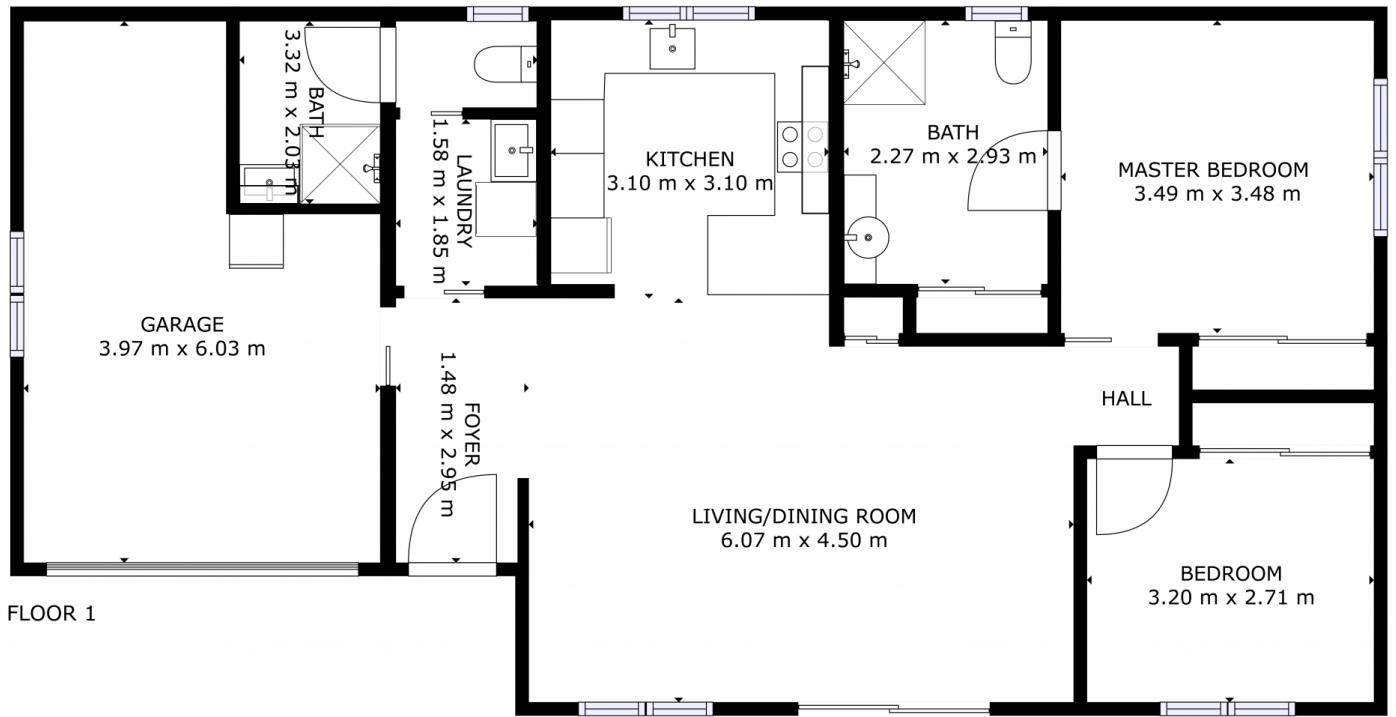
Price : \$ 505,000
Building Size : 101.2 sqm
Land Size : 243 sqm
View : <https://www.4one4.com.au/property/192-10-chapel-street-glenorchy-tas/6698125>



John McGregor
0419 892 104



Aaron Murray
0418969859



FLOOR 1

GROSS INTERNAL AREA
 FLOOR 1: 84 m², EXCLUDED AREAS:
 GARAGE: 20 m²
 TOTAL: 84 m²

SIZES AND DIMENSIONS ARE APPROXIMATE, ACTUAL MAY VARY.

4ONE4.
 PROPERTY CO.