



### 3/18 Alma Street Bellerive TAS

2  1  2 

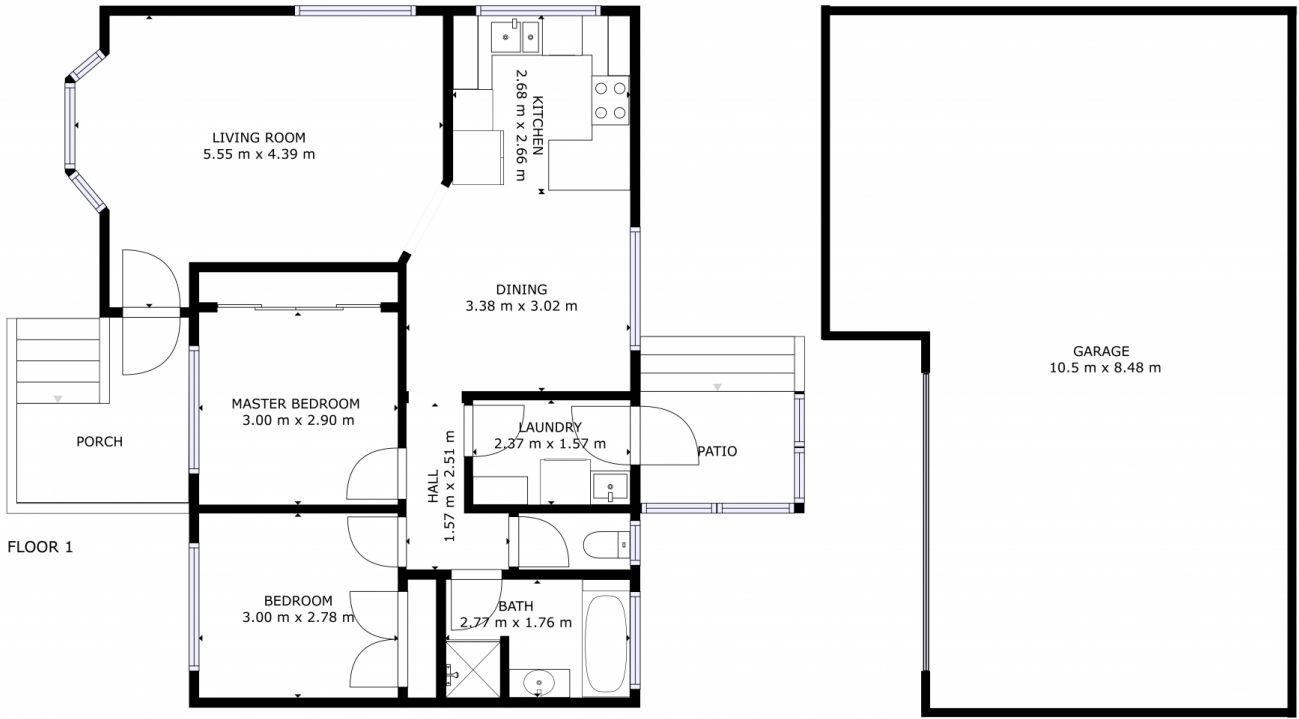
Alma St is located in the heart of Bellerive and elevated to capture stunning views over the Yacht Club, Derwent River to Hobart City, Wrest Point Casino and Mt Wellington in the distance completing a beautiful backdrop. This immaculately presented villa is located just a short stroll from Eastlands Shopping Centre, Bellerive Village with specialty shopping, cafés, the Waterfront Hotel and the Yacht Club, plus a number of local schools catering for children of all ages. And there are far too many sporting clubs and parks to mention, and of course, beautiful Bellerive beach is just down the road.

Upon entry you'll get an immediate appreciation of how well the current tenants maintain this property. The home features a bright and sunny living room where you can relax and take in those stunning views, the well equipped kitchen has plenty of cupboard & bench space and there's

**Price** : \$ 600,000  
**Building Size** : 114 sqm  
**Land Size** : 276 sqm  
**View** : <https://www.4one4.com.au/property/318-alma-street-bellerive-tas/6649055>

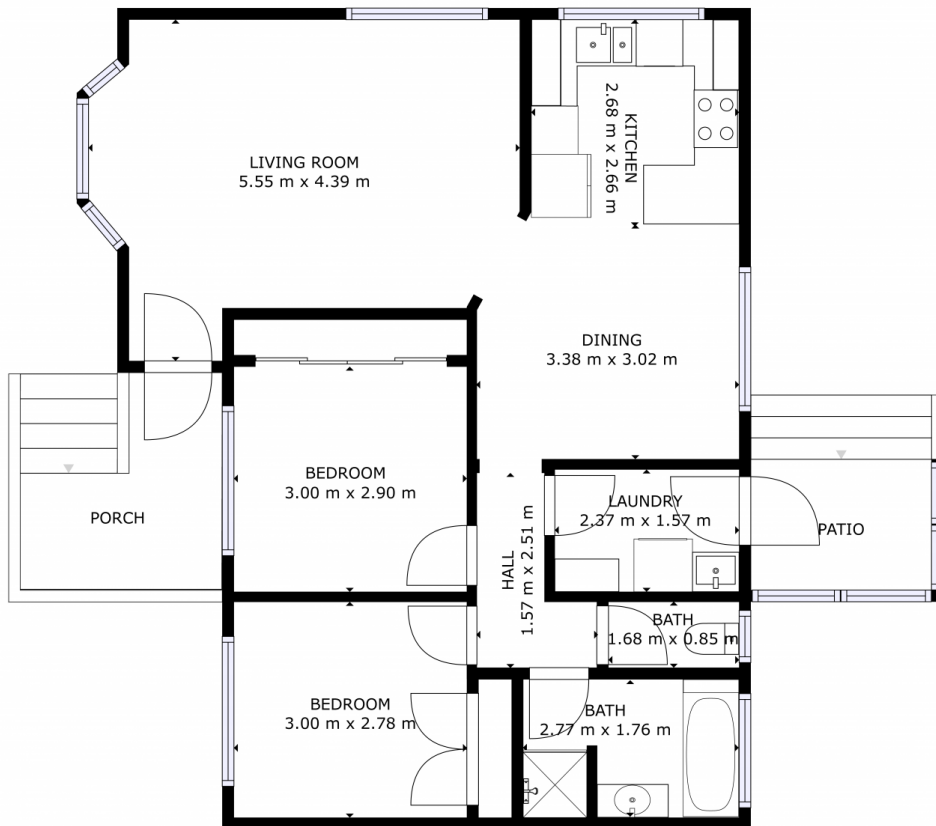


**Martin Evans**  
0362 737 414



SIZES AND DIMENSIONS ARE APPROXIMATE, ACTUAL MAY VARY.

**4ONE4.**  
PROPERTY CO.



GROSS INTERNAL AREA  
FLOOR 1: 74 m<sup>2</sup>  
TOTAL: 74 m<sup>2</sup>

SIZES AND DIMENSIONS ARE APPROXIMATE, ACTUAL MAY VARY.

**4ONE4.**  
PROPERTY CO.