



10 Wylie Crescent West Moonah TAS

3  1  2 

It is with good reason that West Moonah has become increasingly popular. The close proximity to schools, shops, transport and services is a winning formula.

Then, like the case with 10 Wylie Crescent, you discover a large family home set on over 850 square meters of land with commanding views overlooking the suburb and you realise that something special has come across your path.

- * 3 Bedroom family home with enormous amount of character & charm
- * Commanding views across the suburb and still with level access from the street
- * Separate dining, galley kitchen, separate bathroom & toilet
- * Enormous amount of storage with separate garage and multiple rooms underneath

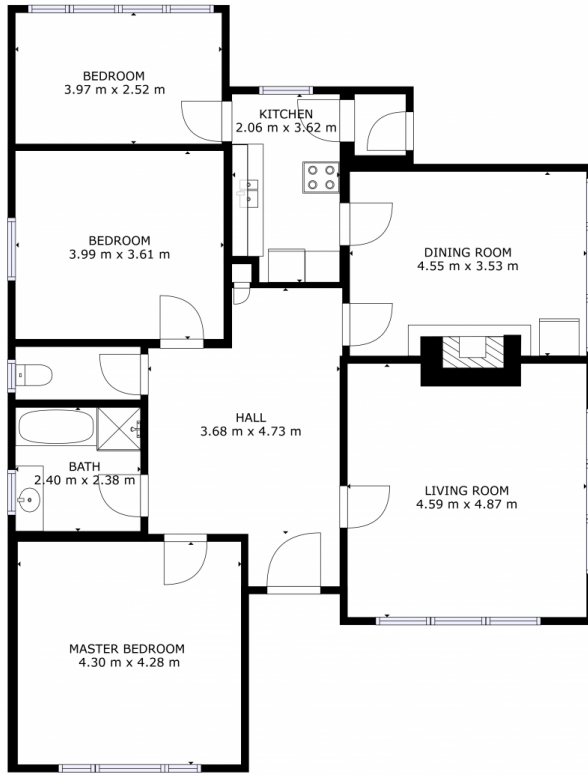
Price : \$ 701,000
Building Size : 135 sqm
Land Size : 865 sqm
View : <https://www.4one4.com.au/property/10-wylie-crescent-west-moonah-tas/6612231>



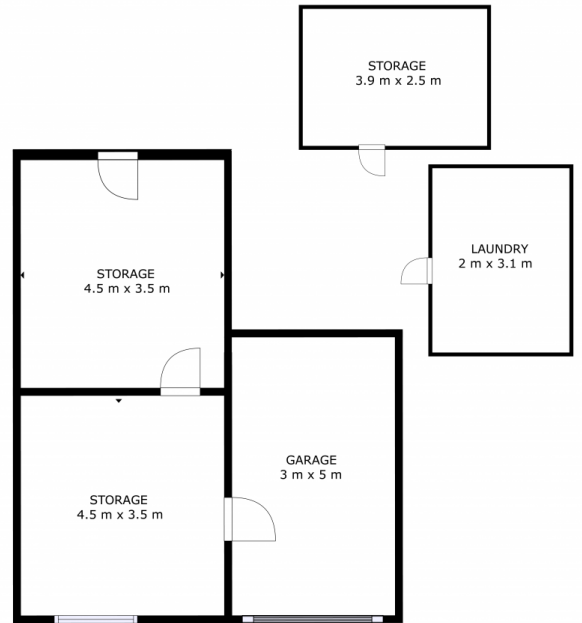
Chris McGregor
0407 421 177



Aaron Murray
0418969859



FLOOR 1



FLOOR 2

GROSS INTERNAL AREA

FLOOR 1: 122 m²

FLOOR 2: 62 m²

TOTAL: 184 m²

SIZES AND DIMENSIONS ARE APPROXIMATE, ACTUAL MAY VARY.